



شركة حديد  
التقنية العليا  
HITECH  
STEEL INDUSTRIES

# HiTemp Heras Panel

TEMPORARY HERAS PANEL

1

Easy to move

2

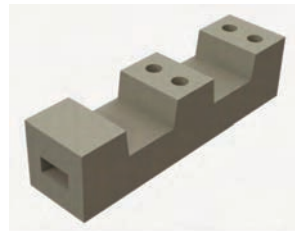
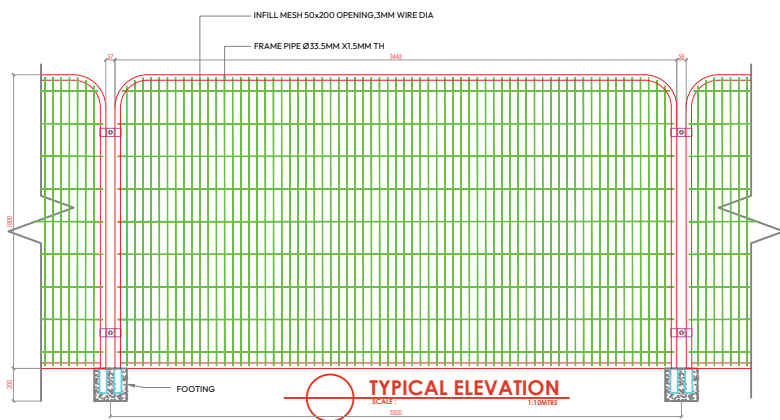
Execeptionally Robust

3

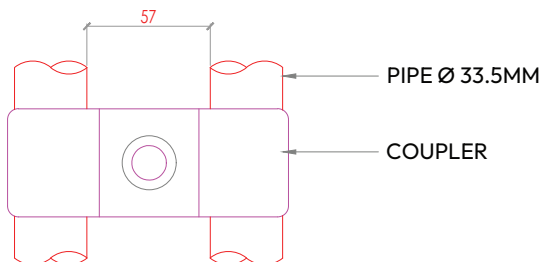
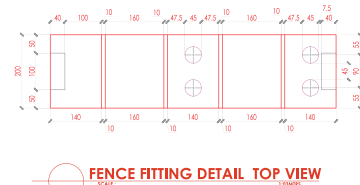
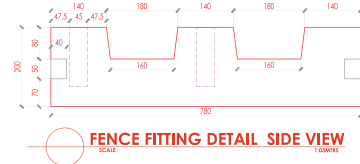
Light Weight Design

4

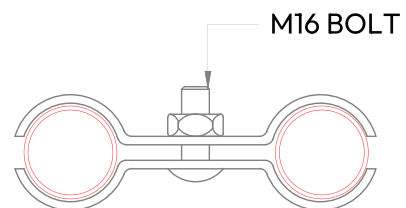
Concrete Foundation  
for Footing



**FENCE FITTING DETAIL 3D VIEW**  
SCALE: 1:100



**FITTING DETAIL**  
SCALE: 1:100  
1:02MTRS



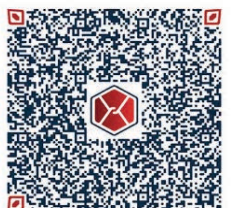
+966 11 474 8635



[www.hitech.sa](http://www.hitech.sa)  
[sales@hitech.sa](mailto:sales@hitech.sa)



Building no 3824, Nira Street, 2nd  
Industrial area, Riyadh 14338 RSNB3824





شركة حديث  
التقنية العليا  
الصناعية  
HITECH  
STEEL INDUSTRIES

# HiTemp Heras Panel

TEMPORARY HERAS PANEL

## FINISH

- Hot dip galvanized to BS EN ISO 1461 as standard
- Hot dip galvanized and powder coated to BS EN 13438
- Marine coat Coating for application near salt water

## SUITABLE

- Industrial area
- Public Works
- Event Management
- Temporary Enclosure
- Construction sites
- Emergency situations
- Sports Venue

## FEATURES

- Light Weight
- Easily Movable from place to place
- Customizable size according to Customer Requirement
- Unique Design



+966 11 474 8635



www.hitech.sa  
sales@hitech.sa



Building no 3824, Nira Street, 2nd  
Industrial area, Riyadh 14338 RSNB3824







شركة حديد  
التقنية العليا  
HITECH  
STEEL INDUSTRIES

# HiTemp Heras Panel

TEMPORARY HERAS PANEL



The HiTemp Heras Fencing system is highly sought-after for indoor and outdoor events such as exhibitions and sports events. Known for their portability and lightweight design, these panels are exceptionally robust, effectively managing pedestrian walkways, vehicular access, and parking areas.

## HiTemp Heras Fence Panels: Strength Meets Portability

HiTemp Heras fence panels are the ultimate choice for temporary fencing, offering:

- **Strength and durability** with smart weld technology.
- **Portability** through a lightweight design.
- **Ease of assembly**, perfect for quick setups

Ideal for various applications, including:

- Event management (concerts, festivals).
- Construction site security.
- Emergency or crowd control situations.

## Why Choose HITECH Fencing?

- At HITECH Fencing, we offer:
- Full project support from design to installation.
- Customized mesh fencing tailored to your specific needs.
- Expert installation services for projects of any size.

## Our Expertise

Fencing installation can be challenging, especially for those without prior experience. That's why our specialists provide:

- **Professional guidance throughout the process.**

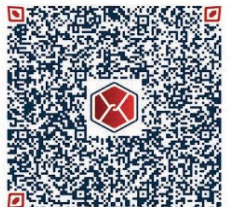
+966 11 474 8635



www.hitech.sa  
sales@hitech.sa



Building no 3824, Nira Street, 2nd  
Industrial area, Riyadh 14338 RSNB3824





شركة حديد  
التقنية العليا  
HITECH  
STEEL INDUSTRIES

# HiTemp Heras Panel

TEMPORARY HERAS PANEL

- Recommendations for the best fencing solutions.
- Expert installations to ensure safety and reliability.

## Installation:

At HITECH Fencing, we provide full support throughout all phases of your project. This includes designing and crafting customized mesh fencing that precisely meets your needs, along with offering professional installation services. Installing a fence, whether for expansive or compact projects, can present challenges, particularly for those without prior expertise. That's why our team of fencing solution specialists is dedicated to offering guidance, recommendations, and expert installation services. With our assistance, you can achieve the advantages of safe and secure fencing efficiently and reliably. Your satisfaction and safety remain our foremost priorities.

PANEL DIMENSIONS	DETAILS
Panel Height	1.2m, 2m, Customizable
Panel Length	3500mm, Customizable
Mesh Size	200 x 50mm, 100 x 300mm, Customizable
Wire Thickness	3mm
Standard Color	White (RAL 9003) (Other colors are also available on request)
Fence Frame	Standard Steel pipe 33.5 mm x 1.5 mmT
COATINGS	
95% zinc — SP aluminum coated	Electrostatic polyester coated
Hot dip Galv.	PVC coated

+966 11 474 8635



www.hitech.sa  
sales@hitech.sa



Building no 3824, Nira Street, 2nd  
Industrial area, Riyadh 14338 RSNB3824

