



Hi Defensive Palisade Fence

Hi defensive palisade fencing system

1

Easy fixing clips

2

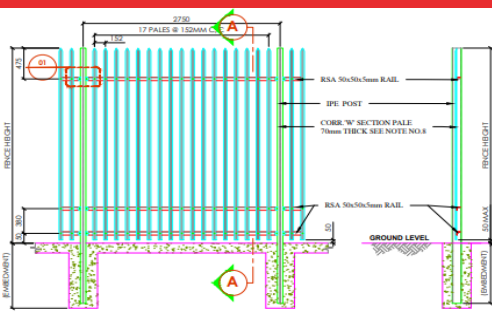
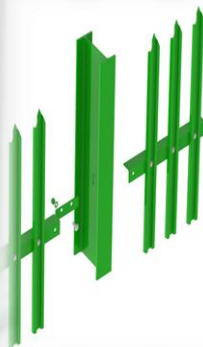
Easy Installation

3

Unique and Attractive Design

4

Galvanized and Polyester Powder Coated Post

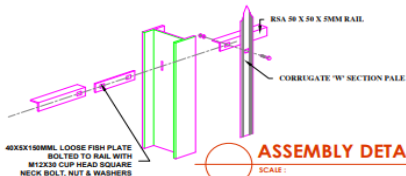


TYPICAL HIGH PALISADE FENCE

SCALE: 1:50 MTS.

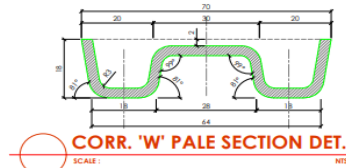
SECTION A

SCALE: 1:50 MTS.



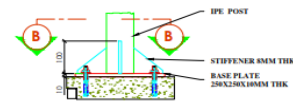
ASSEMBLY DETAIL

SCALE: 1:50 MTS.



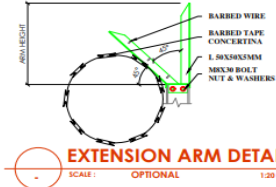
CORR. 'W' PALE SECTION DET.

SCALE: 1:50 MTS.



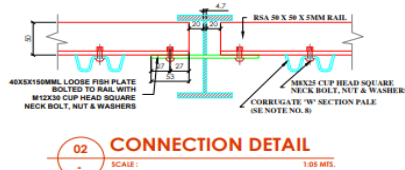
BASE PLATE DETAIL

SCALE: 1:10 MTS.



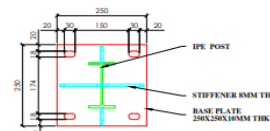
EXTENSION ARM DETAIL

SCALE: 1:20 MTS.



02 CONNECTION DETAIL

SCALE: 1:50 MTS.



FINISH

- Hot dip galvanized to BS EN ISO 1461 as standard
- Hot dip galvanized and powder coated to BS EN 13438
- Marine coat for installations within 500m of salt water or an estuary

FEATURES

- Anti-climb design.
- Complies with BS EN 1722-12 standards.
- Vertical pale spacing adheres to anti-luring building guidelines.
- Various post options: over-length, base plated, or cranked for suitable fixation.
- Customizable post tops for barbed wire, razor wire, electric fencing, or CCTV camera mounting.
- Panels can be racked or stepped to accommodate sloping terrain.
- Adaptable to any landscape.
- Highly durable and suitable for a wide range of applications, from decorative to highly secure installations.

SUITABLE FOR

- High-Security Establishments
- Industrial Units
- Airports Protection
- Government and Military sites
- Critical Infrastructure.
- Sports Centers
- Perimeters
- Company premises
- High Risk & Utilities

Overview:

The Hi Defensive Palisade Fencing System is globally recognized for its robustness and reliability, trusted by numerous nations for safeguarding various premises. With its imposing appearance, inherent strength, and resistance to damage, it serves as an ideal option for ensuring security. The sleek sur-face, solid structure, sharp points, and close spacing of palisade fences create formidable barriers that discourage unauthorized access and intrusions. Elevate the security of your property, office, or factory with this dependable high-tier fencing solution.

Hi Defensive Palisade Fencing System Components:

Post:

Post Options: Available in 102mm x 44mm RSJ section or 127mm x 76mm universal beams, with pitch choices of 2750mm or 3000mm center-to-center. Installation Options:

- Extended length for embedding in the ground
- Base plate for bolting onto concrete
- Cranked to accommodate wall mounting.

Panel:

Our panels reach heights up to 3000mm, featuring vertical pales made from 2mm thick MS sheet forming either 'W' or 'D' shapes. These pales are securely attached to two RSA Rails (50x50x2mm) positioned at the top and bottom. Maintaining a strategic 152mm gap between pales effectively prevents climbing and breaches. Panels are easily bolted and connected to posts using the horizontal rail system.

Fittings: Pales are connected to two horizontal rails via bolt connections to form a cohesive panel. Each panel's stability is enhanced by a 40x5x150mm loose fish plate that runs through the post. Post security is ensured through either embedding in concrete or using a custom-sized welded base plate (250x250x10 mm).

Gates: For Swing Gates: Offer a wide 180° opening angle, equipped with tamper-proof hinges. Constructed from 50x50x4 mm angle iron, gate frames incorporate rails and pales akin to our fences.

- Single Leaf Gates (Sliding or Swing) typically sized at 3000 x 6000 mm (maximum).
- Double Leaf Gates (Sliding or Swing) typically sized at 3000 x 12000 mm (maximum).
- Single gates designed for right-hand installation, opening inwards, complete with key lock, handles, and gate stop.
- Double gates include key lock, handles, center gate stop, and drop bolts for secure closure.

Standard colors

- [Black RAL 9005].
- [Blue BS 20-C-40].
- [Blue RAL 5010].
- [Brown RAL 8017].
- [Green RAL 6005].
- [Grey RAL 7012].
- [Red RAL 3020].
- [White RAL 9010].
- [Yellow RAL 1018].

ITEM CODE	FENCE HEIGHT	PALE HEIGHT	PALE SECTION	POST SIZE	HORIZ RAIL	TOP SLOT	TOP HOLE	BOTTOM SLOT	BOTTOM HOLE	BASE PLATED
HIPLS 100	1.00m	9.50m	2mmW /3mm D	102x 44m	50x50 x5mm	225 mm	225 mm	800mm	150mm	✓
HIPLS 150	1.50m	1.45m	2mmW /3mm D	102x 44m	50x50 x5mm	225 mm	225 mm	1300mm	150mm	✓
HIPLS 200	2.00m	1.95m	2mmW /3mm D	102x 44m	50x50 x5mm	275 mm	275 mm	1750mm	200mm	✓
HIPLS 250	2.50m	2.50m	2mmW /3mm D	102x 44m	50x50 x5mm	275 mm	275 mm	1850mm	200mm	✓
HIPLS 275	2.75m	2.70m	2mmW /3mm D	127x 76mm	50x50 x5mm	475 mm	475 mm	2320mm	380mm	✓
HIPLS 300	3.00m	2.90m	2mmW /3mm D	127x 76mm	50x50 x5mm	475 mm	475 mm	2570mm	380mm	✓

